

ROUTE SELECTION

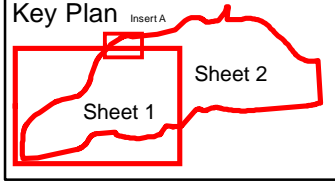
- Legend**
- Scheme Study Area Boundary
 - City Boundary
 - 2006 GCOB Route Option
 - Fault
 - Revised geological boundary proposed by Arup.
 - Fine-grained Foliated Granite
 - Errisbeg Townland Granite
 - Murvey Granite
 - Metagabbro & Orthogneiss Suite
 - Porphyritic Megacrystic Granite
 - Quartz Porphyry & Felsite
 - Visean Limestones (undifferentiated)
 - Area of abundant P-dykes
 - Boundary of igneous intrusion
 - Dyke/Sill
 - Unconformity

Refer to Figure 3.3.4 (Sheet 2 of 2)

© Ordnance Survey Ireland. All rights reserved. Licence number 2010/15CCMA/Galway County Council. Unauthorised reproduction infringes Ordnance Survey Ireland and Government of Ireland copyright.
 © Suirbhéireacht Ordánais Éireann. Gach ceart ar chosaint. Uimhir chadúnais 2010/15CCMA/Comhairle Contae na Gaillimhe. Sáraíonn atáirgeadh neamhúdarthaí cóipeacht Shuirbhéireacht Ordánais Éireann agus Rialtas na hÉireann.

Disclaimer Note:
 The constraints and options shown are draft only and subject to change. More detailed assessments, on-going studies and the information received from the public may result in changes to these constraints and options.
Nóta Séanta:
 Tá na srianta agus na roghanna atá léirithe ina bhfoirm dréacht, d'fhéadfaí athraithe teacht orthu. Is mar thoradh ar mheasúnaithe níos mionchruinne, ar staidéar leanúnach agus ar eolas ón bpobal go ndéanfar athruithe ar na srianta agus na roghanna seo.

Clients



Consultant

Corporate House
 City East Business Park
 Ballybrit, Galway, Ireland
 Tel +353 (0)91 460675
 www.N6GalwayCity.ie
 www.arup.ie

Job Title
N6 Galway City Transport Project

Scale: **1:25,000**

Date: **August 2015**

Issue	Date	By	Chkd	Appd
I1	28/08/2015	EK	MH	EM

Drawing Title
2006 GCOB Route Option with Soild Geology - Sheet 1 of 2

Drawing Status
Route Selection

Job No: **233985-00** Figure 3.3.3

Issue: **11**